



Republic of Serbia
Ministry of Finance
Ministry of Mining and Energy



Construction and Commissioning of Waste Water Treatment Plant at TPP Kostolac B

Ref. EuropeAid/137116/IH/WKS/RS





Republic of Serbia
Ministry of Finance
Ministry of Mining and Energy



AGENDA – Site Visit and Information meeting

Time	Activity
9:00 – 9:10	Introductory Remarks
9:10 – 09:25	Presentation of Project, Stakeholders and Procedures
09:25 – 10:00	Issuance of Certificates for Attendance at Information Meeting and Site Visit
10:00 – 10:15	Preparation of Schedule for Design and Drawings Inspection
10:15 – 11:10	Training on Occupational Safety and Health
11:15 – 15:00	Site visit



Republic of Serbia
Ministry of Finance
Ministry of Mining and Energy



The Project funded by European Union
through
IPA 2013 National Programme
Co-financing by The Republic of Serbia



Republic of Serbia
Ministry of Finance
Ministry of Mining and Energy



**The tender procedure:
International open tender**

**Procurement rules:
PRAG – Practical Guide, dated 2016, published on 15th January 2016**



MAIN STAKEHOLDERS



Contracting Authority:

The Government of The Republic of Serbia,
represented by the Ministry of Finance,
Department for Contracting and Financing of EU-Funded Programmes
(**CFCU**)

Final Beneficiary:

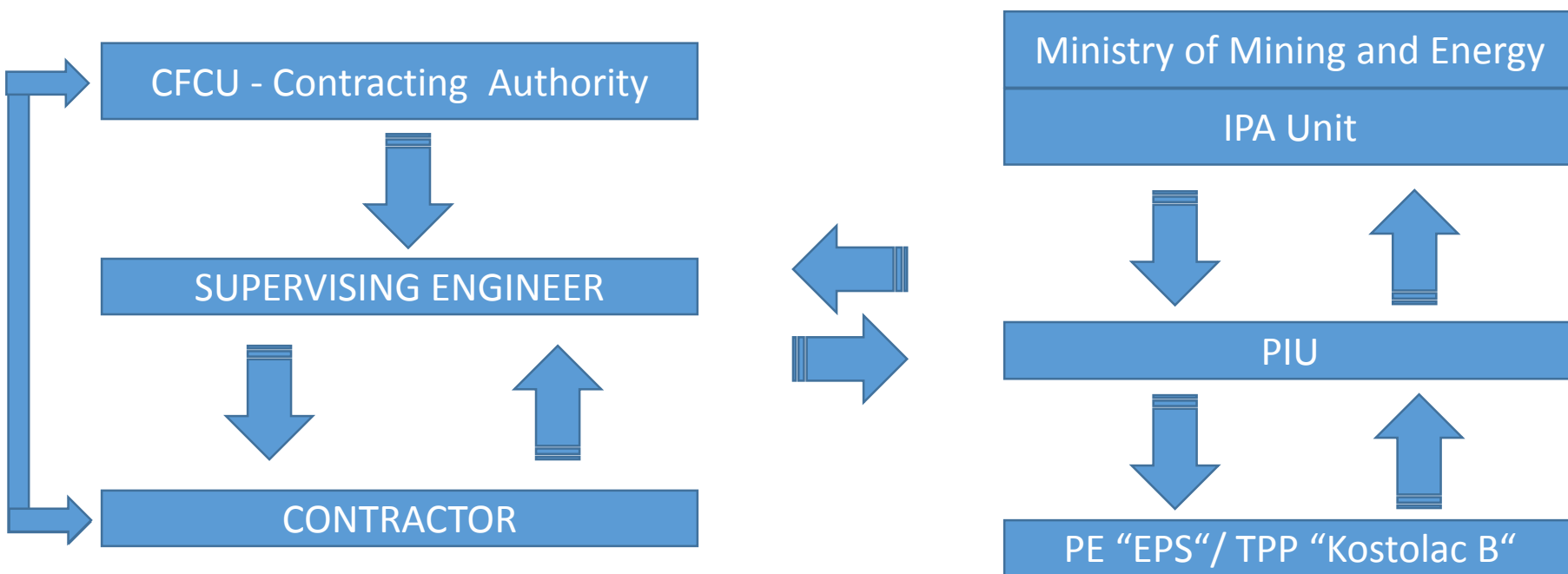
Ministry of Mining and Energy of The Republic of Serbia

End Recipient

Public Enterprise “Electric Power Industry of Serbia” / TPP Kostolac B



EU FUNDED PROJECT – PARTIES/IMPLEMENTATION





Republic of Serbia
Ministry of Finance
Ministry of Mining and Energy



E-mail: cfcu.questions@mfin.gov.rs

<http://www.cfcu.gov.rs>

<https://webgate.ec.europa.eu/europeaid/online-services/index.cfm?do=publi.welcome>



Republic of Serbia
Ministry of Finance
Ministry of Mining and Energy



General Technical Notes

The objective of this project is the design, construction, commissioning, place in operation and testing of the WWTP in order to reduce the wastewater emissions from the Thermal Power Plant “TEKO B” and to meet the emission limit values established by the European Union, Serbian and local legislation as specified in the TD.

The project envisages the construction of a new Waste Water Treatment Plant (WWTP) of the “TEKO B Kostolac” Thermal Power Plant (TPP), to treat the waste waters produced by the existing Units B1 and B2 (2 x 348.5 MW), the future Unit B3 (350 MW) and the future Flue Gas Desulphurization Plants (FGD) for B1, B2 and B3 Units.

Period of Implementation - 24 months (730 days).

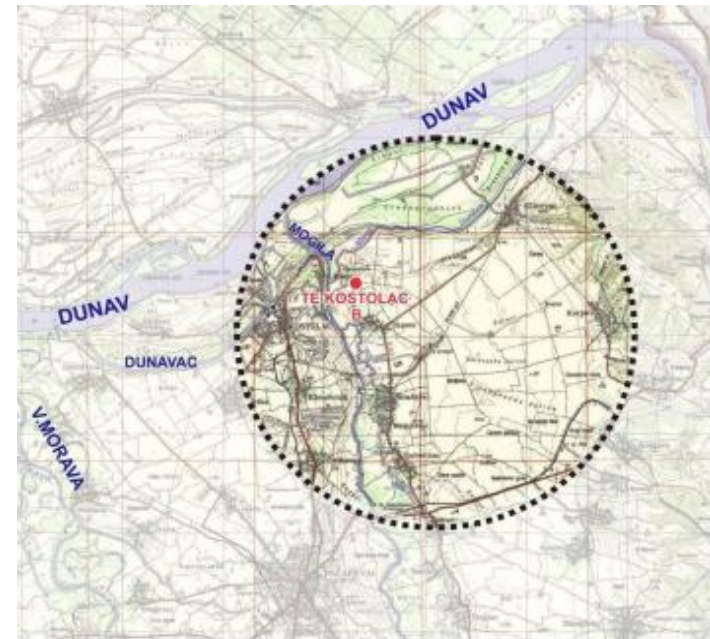
Defects Notification Period - 12 months (365 days)



Location of the Project



The project will be implemented within TPP “TEKO B” area which is located in the right bank of Mlava River, approximately 5 Km from the Danube River in the territory of Kostolac. Kostolac is a small town (14,000 inhabitants) situated some 100 Km to the east – northeast from Belgrade and belongs to the municipality of Požarevac which is the largest town (50,000 inhabitants) in the region.



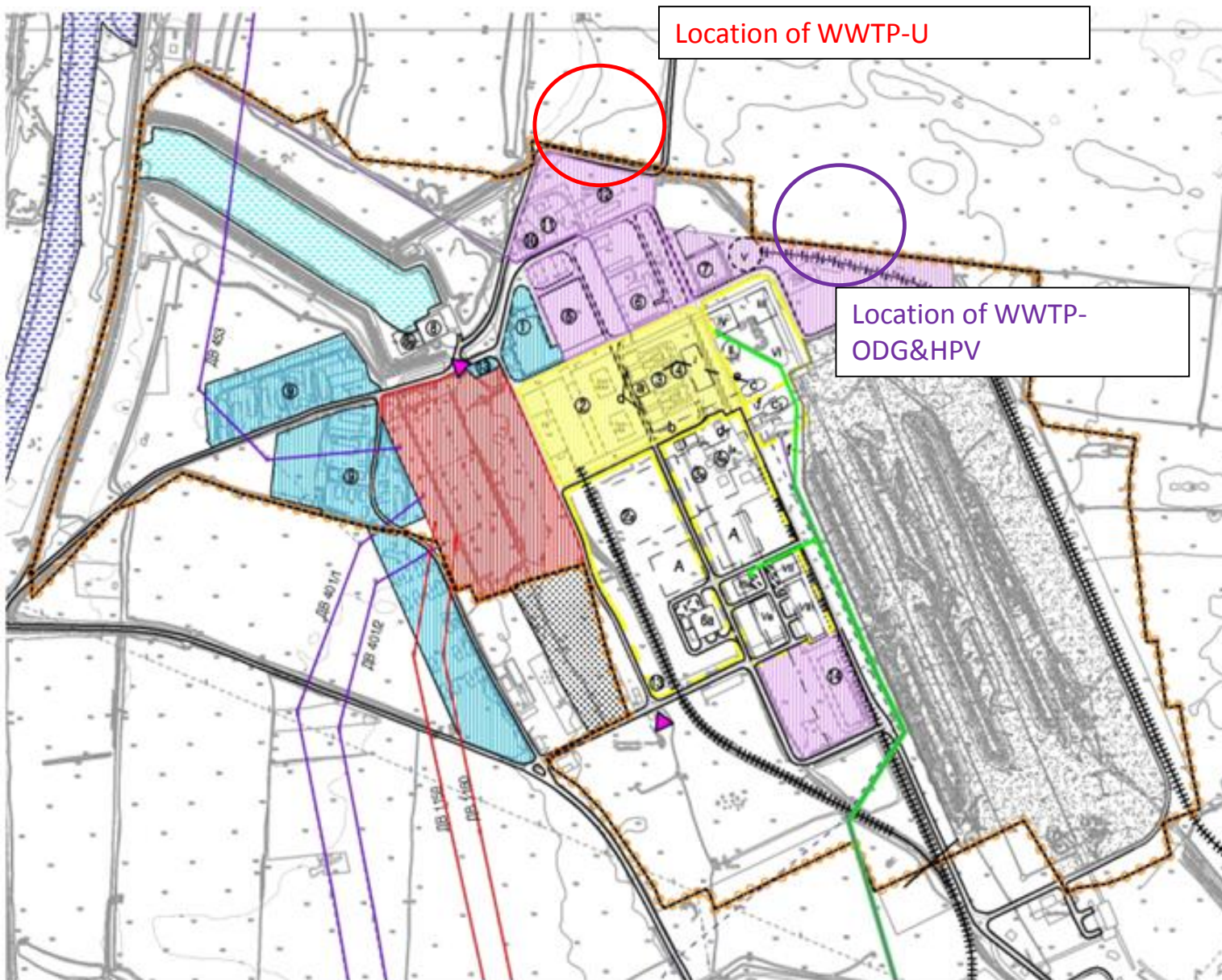


Waste Water Streams Encompassed by Project

The new WWTP will consist of four (4) treatment stations:

1. The **Oily and HFO polluted Waste Water** Treatment Plant (**WWTP-U**), where the HFO and mineral oil and lubricants contaminated waste water streams, will be treated.
2. The **FGD and chemically polluted Waste Water** Treatment Plant (**WWTP-ODG&HPV**) where the future FGD blow down waste waters and the existing and future WTP effluents will be treated.
3. The **Sanitary wastewater** biological treatment (**WWTP-S**), capable to treat all sanitary waste water including the additional sanitary effluents which will be generated in the future Plants.
4. The **storm water** cleaning by installing 4 local gravitational oil separators.

LOCATION OF WWTP FACILITY



ЛЕГЕНДА

- Комплекс ТЕ 'Костопац Б'
- Улаз у комплекс
- Зона главних погонских објеката и примарних садржаја
- Зона пратећих техничких објеката
- Зона пратећих објеката
- Разводно постројење
- Депонија угља
- Канал раскладне воде
- Интерне саобраћајнице и саобраћајне површине
- Интерна железничка пруга
- ДВ 400 кV
- ДВ 110кV
- Пепеловод из ТЕ 'Костопац Б' до СКО
- Локација планираних главних погонских објеката и примарних садржаја
- Планирани објекти
- Систем за транспорт гипса
- Планирани пепеловод
- Гробље
- Река Млава



Republic of Serbia
Ministry of Finance
Ministry of Mining and Energy



Thank you for your attention.